

Acer Projector Gateway

Introduction

The Acer Projector Gateway (APG) is a smart, integrated system that enhances presentations via your Acer projector. The APG provides versatile source connectivity, the latest eDisplayPro Management tools for networking display, supports for media contents playback via the built-in decoder and more.

Networking APG features

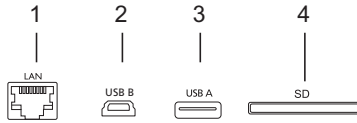
- With high-performance wireless projection via an acer USB WiFi adapter or an RJ-45 port for wired connections (only for the models with RJ-45 port).
- The projector can act as an access point (AP) or work in WiFi con-current mode when doing networking display.
- Users can easily launch the Acer eDisplayPro Management to do Full screen, L/R, 4-split screen projection and enable high quality video streaming.
- Powerful wireless display features ready for devices with different OS (MS Windows, Mac OS, Android, iOS)
- Supports wireless network security (WPA-PSK, WPA2-PSK).
- Acer Projector Gateway Web Management enables a web-based control of Acer projector for Windows NB/PC (only when the projector is in AP mode).
- Supports firmware upgrade via USB flash drive.
- Crestron compliant (only for the models with RJ-45 port).



Multi-media features

- Fancy and stylish user interface for better experience.
- You can enjoy media & documents playback via internal memory, USB flash drive and SD card (for selected models).
- Supports high resolution JPEG and BMP picture formats, slideshow and various slideshow effects for the best viewing experience.
- Supports MP3, PCM and WMA...audio formats, music spectrum and random play function for your pleasing.
- Supports MPEG4, H.264, WMV, MKV and RMVB...video formats and smooth video playback with 1080p@30Hz.
- Supports office documents playback (Word, Excel, PowerPoint, PDF).
- Easy control for all media functions by the remote control.
- You can mirror or extend your screen via the source USB B or USB Connection.

Getting Started

Connecting multi-media device to the projector



#	Component	Description
1	LAN port	Connects to an Ethernet 10/100-based network.
2	Mini USB	Projects NB/PC screen via mini USB (USB B or USB Connection). <div style="text-align: center;">  <p>-----</p> <p>NOTE: USB Type A is for USB display (K1 series).</p> </div>
3	USB Type A	Connects to USB flash drive for multimedia playback. Or connects to a USB WiFi adapter (optional). <div style="text-align: center;">  <p>-----</p> <p>NOTE: To enable wireless function, the USB Wireless Adaptor must be plugged into the USB A/USB A1/Wireless Dongle port.</p> </div>
4	SD card slot (for selected models)	Insert the SD card for multimedia playback.

To switch between different inputs, press SOURCE on the projector or remote control to open the Source menu that allows you to select an input signal source.



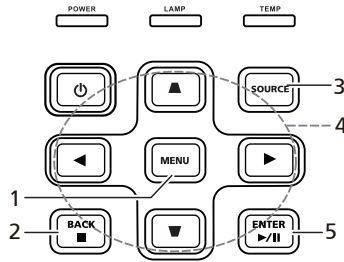
Copyright © 2015. Acer Incorporated.
All Rights Reserved.


Changes may be made periodically to the information in this publication without obligation to notify any person of such revisions or changes. Such changes will be incorporated in new editions of this manual or supplementary documents and publications.

This company makes no representations or warranties, either expressed or implied, with respect to the contents hereof and specifically disclaims the implied warranties of merchantability or fitness for a particular purpose.


Control Panel and Remote Control








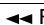
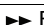

Control Panel



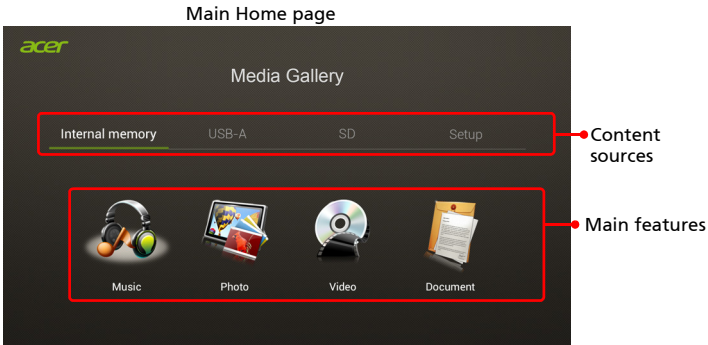
#	Function	Description
1	MENU	Launches the projector Onscreen Display (OSD) menu.
2	BACK ■ Stop	Cancels your selection, or goes back to previous page. Stops the playing of media files.
3	SOURCE	Press to open the Source menu that allows you to select an input signal source. 
4	Four directional selection keys	Selects the media files or features in four directions.
5	ENTER ▶/ Play/Pause	Confirms your selection of items. Plays/Pauses the of playing media files.

Remote Control

#	Function	Description
1	ENTER	Confirms your selection of items.
2	BACK	Cancels your selection, or goes back to previous page.
3	MEDIA HOME	Goes to MEDIA HOME page.  NOTE: This button is only available when the input signal is MEDIA.

#	Function	Description
4	 Four directional select pad	Selects the media files or features in four directions.
5	VOL +/-	Increases/decreases the volume.
6	 Rewind	<ul style="list-style-type: none"> Goes to the previous file. Rewinds the playing of media files with a long press for 1 second.
	 Play/Pause	Plays/Pauses the playing of media files.
	 Stop	Stops the playing media files.
	 Fast-forward	<ul style="list-style-type: none"> Goes to the next file. Fast-forwards the playing of media files with a long press for 1 second.
	 Previous	Goes to the previous file.
	 Next	Goes to the next file.
	 Rewind	Rewinds the playing of media files.
	 Fast-forward	Fast-forwards the playing of media files.
7	SOURCE	<p>Press to open the Source menu that allows you to select an input signal source.</p> 
8	MENU	Launches the projector Onscreen Display (OSD) menu.
9	MEDIA SETUP	Opens MEDIA SETUP page.
10	PAGE ^/v PgUp/PgDn	For computer mode only. Use the button to select the next or previous page. This function is only available when connected to a computer via a USB cable.
11	INFO	Displays information of the selected file.
12	A/a	Launches the projector OSD subtitle menu during video playback.

Media Mode



This mode allows you to browse media files stored in different devices, such as RAM (internal memory), USB flash drive, USB hard drive and SD card (for selected models) when connected to the projector. No matter where you are, you can always press MEDIA HOME to go back to MEDIA HOME page.

Adjust projector source to MEDIA.



.....

NOTE: Document mode is an optional function.



.....

NOTE: Supported capacity for USB flash drive: up to USB 3.0 64GB, for USB hard drive: up to 1TB.



.....

NOTE: Supported capacity for SD/SDHC/MicroSD: up to 64GB Class 2-10.



.....

NOTE: Some external USB hard drives may not be supported due to lack of USB power.



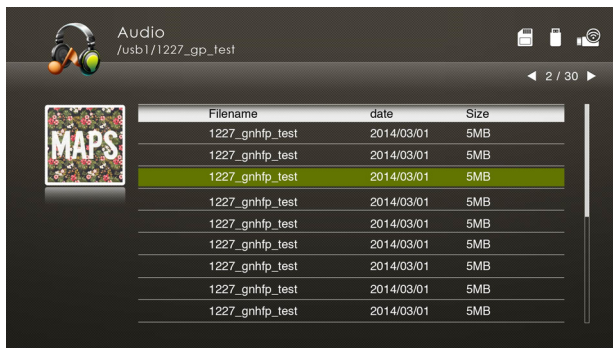
.....

NOTE: Disks with partitions are not supported.



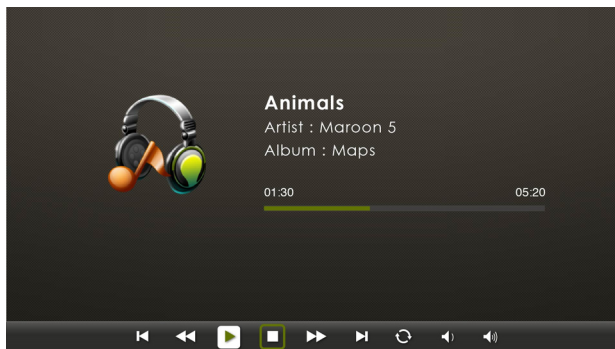
Music

When viewing music files



You can press ▲/▼ to select the file and press ENTER to access.

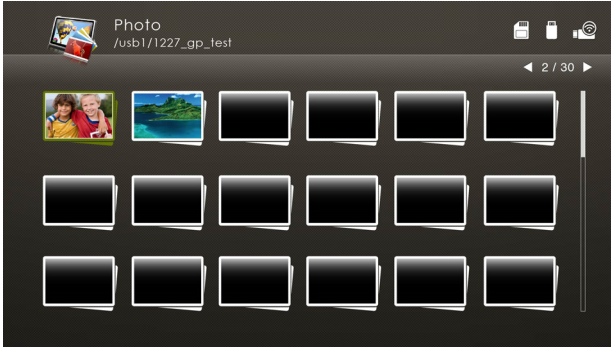
When playing music



You can press ◀/▶ to select a feature such as PLAY/STOP/REPEAT/REWIND/FAST-FORWARD/VOLUME UP/VOLUME DOWN and press ENTER to execute.

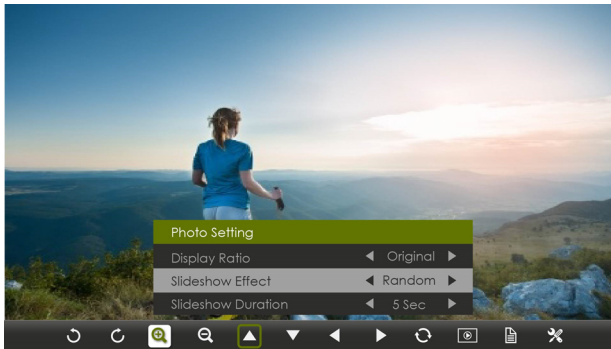


When viewing photos



You can press ▲/▼/◀/▶ to select the file and press ENTER to access.

When playing photos

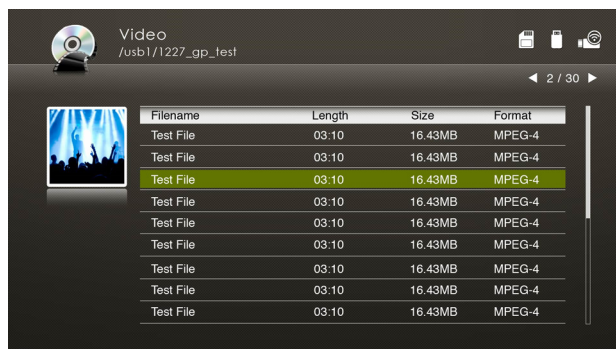


You can press ◀/▶ to select a feature and press ENTER to execute. For details on the Photo Setting, see "Photo Setting".



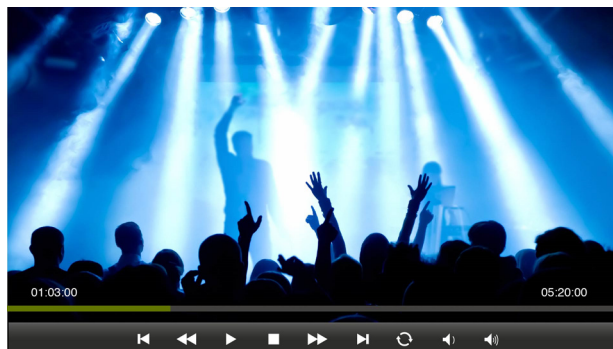
Video

When viewing video files



You can press ▲/▼ to select the file and press ENTER to access.

When playing videos

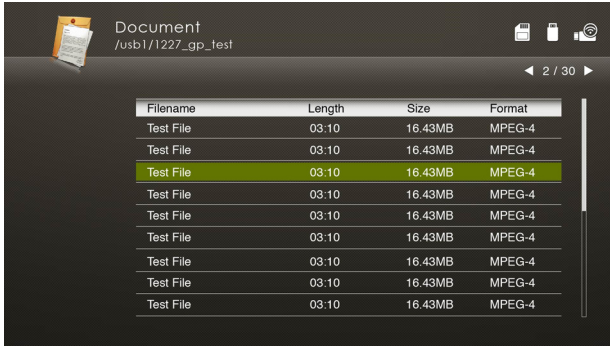


You can press ◀/▶ to select a feature such as PLAY/STOP/REPEAT/REWIND/FAST-FORWARD/VOLUME UP/VOLUME DOWN and press ENTER to execute. For details on the Video Setting, see "Video Setting".



Document (optional)

When viewing document files



You can press ▲/▼/◀/▶ to select the file and press ENTER to view it. Button operations are different when viewing different types of documents.

For details on the Document Setting, see "Document Setting".



NOTE: Office Reader:

- 1 All IPR, including but not limited to copyright, in the Písel Products is owned by Písel suppliers.
- 2 The End User may not:
 - Make copies of the Písel Products or make them available for use by third parties.
 - Reverse engineer, disassemble, reverse translate, or in any way decode the Písel Products or any copy or part of it in order to derive any source code, save only as is permitted by any applicable law.
- 3 Písel make no representations or warranties whether express or implied (by statute or otherwise) relating to the performance, quality, merchantability or fitness for a particular purpose of the Písel Products or otherwise and all such representations or warranties are specifically disclaimed and excluded.
- 4 Písel agrees and acknowledges that Písel and the Písel Products will not be specifically mentioned in the end user license agreement.



.....

NOTE: No support for advanced settings, such as Microsoft Word drawing plug-in or table background settings.



.....

NOTE: Contents outside the defined borders in Microsoft Word will not be displayed.



.....

NOTE: Microsoft PowerPoint slide effects not supported.



.....

NOTE: Worksheets are displayed individually and sequentially when the workbook has multiple worksheets.



.....

NOTE: Page layout and numbering may be changed during decoding.



.....

NOTE: Objects embedded in files cannot be activated or viewed.



.....

NOTE: Decoding may take a while for large files with complex contents.



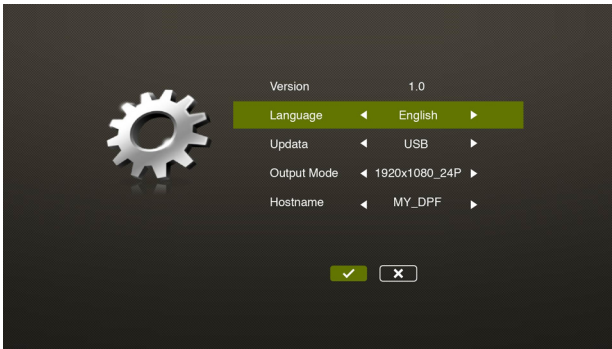
Media Setup

Media setup page allows you to adjust settings for file listing and playing. To use the media setup page:

Press MEDIA SETUP when listing or playing media files to access individual menu items for different types of media files.

Or you can follow below steps to access all menu items.

- 1 Adjust projector source to MEDIA.
- 2 Press ◀/▶ to select Setup and press ENTER.
- 3 Press ▲/▼ to select a main menu item and press ENTER to enter.
- 4 Press ▲/▼ to select a submenu item and press ◀/▶ to change setting values.
- 5 To exit, press "X".



Video Setting

Menu item	Options
Display Ratio	Letter box/Cut screen/Full screen/Original
Repeat Mode	Sequence/Single/Random/Once

Photo Setting

Menu item	Options
Display Ratio	Original/Full screen
Slideshow Pattern	Random/Ring Diffusion/Middle Enlarge/Expand Blink/ Window Shades/Linear Interaction/Cross Interleaved/ Banding Alternate
Slideshow Duration	10 sec/30 sec/1 min

Music Setting

Menu item	Options
Repeat Mode	Sequence/Single/Random/Once

Document Setting

Menu item	Options
Display Ratio	Fit to screen/Fit to width/Fit to height

Firmware Upgrade

There are 2 ways to do this:

- Using a USB flash drive
 - 1 Download new media FW files by one compressed file from acer global website.
 - 2 Copy all uncompressed files in USB flash drive (Acer_Upgrade.bin as released and Acer_upgradeinfo.ini), and plug in projector.
 - 3 Check projector source upto USB A.
 - 4 Media Gallery > Setup > Firmware Upgrade.
 - 5 Confirm to go.
 - 6 Projector will show welcome screen automatically when upgrade finishes.



NOTE: When upgrading the firmware, remove all cables and other USB devices.



NOTE: To utilize the Mirroring Display function (optional), make sure you have updated the firmware to the latest version from www.acer.com, and use the acer USB WiFi adapter.

- **OTA (Over-the-air)**

- 1 Connect a USB wireless adapter (optional) or a RJ45 cable to the projector. (Make sure it connects to the internet.)
- 2 Select "LAN/WiFi" or "eDisplayPro" mode via the OSD menu.
- 3 The projector will automatically search for the latest firmware version available.
- 4 Select YES when the projector pops out a message to remind you that there is a new firmware version for you (by Acer eDisplayPro app remote).
- 5 Do not turn off the projector while the firmware is updating.

Supported multi-media formats

1	JPEG Decode	Supports JPEG picture formats
		Thumbnails preview
		Supports BMP picture formats
2	Video Decode and Movie Formats	Supports MJPEG
		Supports H263, H264
		Supports AVI, MOV movie formats
		Supports SRT Subtitle format.
3	Music Formats	Supports PCM, ADPCM audio formats
		Supports WMA/OGG/MP3
4	Card Reader Interface (for selected models)	Supports SD memory card
		Supports SDHC memory card
5	USB Interface	Supports mass storage class
		Supports USB2.0



.....

NOTE: The video clip and its SRT subtitle file must be located in the same folder and with same filename (ex. Abcde.avi & Abcde.srt).



.....

NOTE: Some user-made subtitles may not work properly.



.....

NOTE: Video clips produced with some encoders may not be played correctly. Detail is to follow format supported table.



.....

NOTE: The media mode supports max. 999 directories and max. 9999 files for USB devices/disks.

Supported photo formats

Image type (ext name)	Sub type	Encode type	Max pixels
Jpeg / Jpg	Baseline	YUV420	No Limitation
		YUV422	
		YUV440	
		YUV444	
	Progressive	YUV420	5120 X 3840
		YUV422	
		YUV440	
		YUV444	
BMP			No Limitation



NOTE: JPEG header size must be under 512 Kbytes.

Supported music formats

Music type (ext name)	Sample rate (KHz)	Bit rate (Kbps)
MP3	8-48	8-320
WMA	22-48	5-320
OGG	8-48	64-320
ADPCM-WAV	8-48	32-384
PCM-WAV	8-48	128-1536
AAC	8-48	8-256

Supported video formats

File format	Video format	MAX res	MAX bit rate	Frame rate	Audio format	Remark
AVI MKV	XVID MPEG-2/4 H.264 M-JPEG WMV3	1080P	30Mbps	30fps	MPEG1/2/3 PCM ADPCM AAC	No support VC-1 AP H. 264 support less than 6 reference frames
TS	MPEG-2 H.264	1080P	30Mbps	30fps	MPEG1/2/3 LPCM AAC	H. 264 support less than 6 reference frames
DAT VOB MPG MPEG	MPEG-1 MPEG-2	1080P	30Mbps	30fps	MPEG1/2/3 LPCM	-
MOV MP4	MPEG-4 H.264	1080P	30Mbps	30fps	PCM AAC	H. 264 support less than 6 reference frames
RM RMVB	RV3 RV4	720P	5Mbps	30fps	Cook (RA6) AAC (RA9) RACP (RA10)	-
WMV	WMV3	1080P	25Mbps	30fps	WMA2 WMA3	No Support VC-1 AP



.....

NOTE: B-Frame function is not supported.

Supported subtitle formats

Format	Font	Subtitle Size
Standard SRT	UTF-8/ UTF-16	4bits up to 448x200 2bits up to 896x200



.....

NOTE: Mixed code in subtitle files is not supported.

Supported document formats

File format	Support version	Pages/lines limitation	Size limitation	Remark
Adobe PDF	PDF 1.0	Up to 1000 pages (One File)	Up to 75MB	-
	PDF 1.1			
	PDF 1.2			
	PDF 1.3			
	PDF 1.4			
MS Word	British Word 95.	Because office viewer does not load all pages of MS Word file at the same time, there are no obvious limitations of page and line.	Up to 100MB	Not support Bold Text in Simple Chinese font
	Word 97, 2000, 2002, 2003.			
	Word 2007(.docx), 2010(.docx)			

MS Excel	British Excel 5, 95.	Row Limit: up to 595	Up to 15MB	Not support password-protected sheets
	Excel 97, 2000, 2002, 2003.	Column Limit: up to 256		
	Excel 2007(.xlsx), 2010(.xlsx).	Sheet up to 100		
	Office XP Excel	Note: Any one of three limitations above can not appear on one excel file simultaneously.		
MS PowerPoint	British PowerPoint 97.	Up to 1000 pages (One File)	Up to 19MB	No support SlideShow order
	PowerPoint 2000, 2002, 2003.			
	PowerPoint 2007(.pptx).			
	PowerPoint 2010(.pptx), .			
	Office XP PowerPoint.			
	PowerPoint presentation-2003 and earlier(.ppx)			
	PowerPoint presentation-2007 and 2010(.ppsx)			

eDisplayPro Management for Windows/Mac OS

Adjust projector source to LAN/WiFi.



NOTE: To utilize the Mirroring Display function (optional), make sure you have updated the firmware to the latest version from www.acer.com, and use the acer USB WiFi adapter.

System Requirements:

- Windows

Minimum requirement

Component	Requirement	Remark
CPU	Dual Core Intel Core i 1.6 GHz or higher	ATOM and Celeron are not supported
Graphic card	Intel, nVIDIA or ATI graphic card with 64MB VRAM or above	
Operating System	Windows XP SP3, Vista SP2, Win 7 SP1 and Win 8	Not support Starter version
HDD	40MB free space	40MB free space

Recommend system settings

CPU	Dual Core Intel Core i5 2.4Ghz
Memory	DDR 4GB and above
Graphic card	256MB VRAM or above
Operating System	Windows 7 SP1

- Mac OS

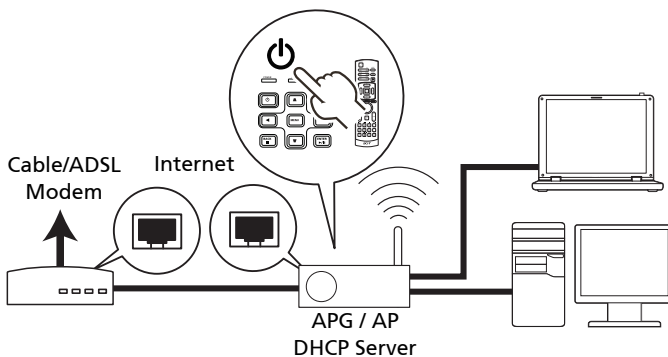
CPU	Dual Core Intel Core i 1.4 GHz or higher (PowerPC not supported)
Graphic card	Intel, nVIDIA or ATI graphic card with 64MB VRAM or above
OS	Mac OS X 10.7 and above
WiFi	802.11n
Recommended models	Mac Book series and iMac series after E/2011

Connect to the projector

Before you begin projecting, you will need to do the following things:

Turn on and connect to the network

Press the **Power button** on the bundled remote control or the device to turn on your Acer projector and enable the WLAN. Connecting the projector to the LAN for a wired connection is also recommended.



Select the source "LAN/WiFi", you will see the eDisplayPro welcome screen. You can set the projector to play 2 kinds of roles: AP Mode (Default) or Con-current Mode by going to the eDisplayPro APP and tap the Setup icon.



- 1 Download and install the Acer eDisplayPro or eDisplayPro from Google Play or Apple App Store or Acer global website
- 2 Open the WiFi settings on your NB/PC/Smartphone/Tablet, and find the SSID (Acer_Projector) and connect to it.
- 3 Launch the Acer eDisplayPro app on your device.
- 4 Tap the desired function.

Check the information on the splash screen

Take note of the important information on the splash screen. The splash screen consists of the following items: **Projector ID, Acer logo, network information and instructions.**

Projector ID (displayed only when available)

The 4-digit number will not be displayed on the top left of the splash screen until this option is enabled by the supervisor in the **Configure** tab under Acer eDisplayPro Management. The four digits are given randomly for projector identification. For more information, please see "Projector ID".

Projector Name (SSID)

The Projector Name and initial Service Set ID (SSID) can be added by the supervisor on the Configure tab of Acer eDisplayPro Management. For more information, please see "Network settings".

Server IP

The Server IP indicates the IP address your projector uses to connect to a wired or wireless network. It will be 192.168.100.10 for general wireless and wired connections. The Server IP will be assigned by the wired network with DHCP enabled. For more information, please see "Network settings".



.....

NOTE: If a RJ-45 cable is not connected, the LAN IP will be 0.0.0.0.

Security: (None, WPA-PSK, WPA2-PSK)

WPA-PSK (WiFi Protected Access - pre-shared key) and WPA2-PSK are individual encryption methods with higher level security. The option is enabled by the supervisor in the **Configure** tab under Acer eDisplayPro Management. For more information, please see "Security settings".

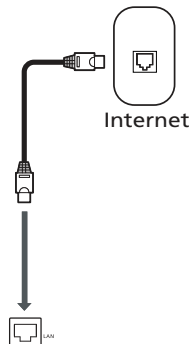
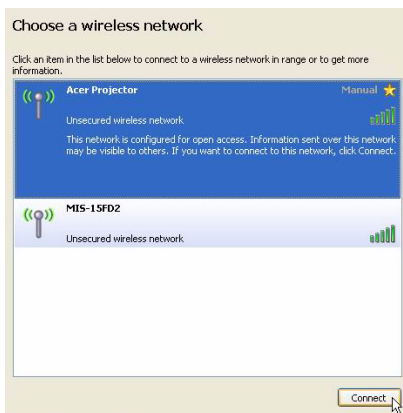


.....

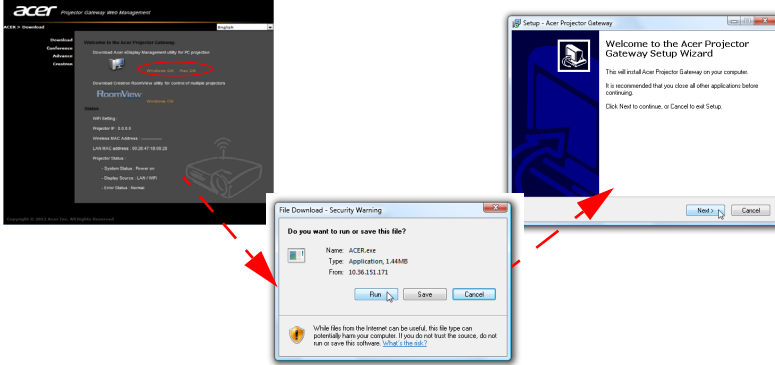
Note: Make sure the LAN/WiFi setting in the projector OSD is On when using the WiFi Display.

Follow the instructions on the splash screen to connect and project

- 1 Check **Projector ID**, **Projector Name (SSID)**, **Server IP** and **Security option** on the splash screen. Ask your supervisor to set safer key when Security is enabled.
- 2 Enable your WLAN and select the access point labeled **AcerProjector** or **AcerProjectorXXXX** to connect wirelessly. Connect the projector to your LAN for a wired connection.



- 3 Open the Internet browser (see note). Click on **Download Acer eDisplayPro Management** on the welcome page, and then click **Run** to launch the **Welcome to the Acer Projector Gateway Setup Wizard**. The installation will proceed automatically. Make sure the installation is complete.



Note: If you do not see the welcome page or cannot connect to the wired network, please enter the **Server IP** address (the second item listed under the Acer logo on the splash screen) into your browser's address bar.



Note: Ensure that you have administrator-level permission on your NB/PC so that you can install the software.



Note: If you receive any security warnings, click **OK** to proceed with the installation procedure.



Note: The Acer eDisplayPro Management shortcut will be created in desktop when the installation is complete.



- 4 Acer eDisplayPro Management will execute automatically and the window shown below will pop up to search for your Acer projector.



.....
Note: Make sure your personal firewall does not block the Acer eDisplayPro Management application.



.....
Note: If your NB/PC cannot allow auto-run function, please execute AcerProjectorGatewayW7.exe manually.

Acer eDisplayPro Management

Acer eDisplayPro Management helps users connect to, and control Acer projectors.

Acer eDisplayPro Management includes the following features:

For first time installation

The utility can be downloaded directly from the projector using a wireless or wired network connection.

The software will be set up on any NB/PC in just a few minutes, without disks.

Security

Acer eDisplayPro Management supports PIN code security, protecting the Acer projector from unauthorized access and use.

Wireless communications between the Acer projector and NB/PC are protected using unique, image-based encryption to prevent eavesdropping or modification of the video signal.

Simple GUI for one-click projection

The easy-to-use GUI enables one-click usability in finding and connecting to the wireless projector, changing display settings, and controlling the projector.

It also supports up to four simultaneous presentations.

Onscreen remote

An onscreen remote utility gives any user the ability to control functions of the projector without the owner worrying about the loss of or damage to the projector's remote handset or worn-out batteries.

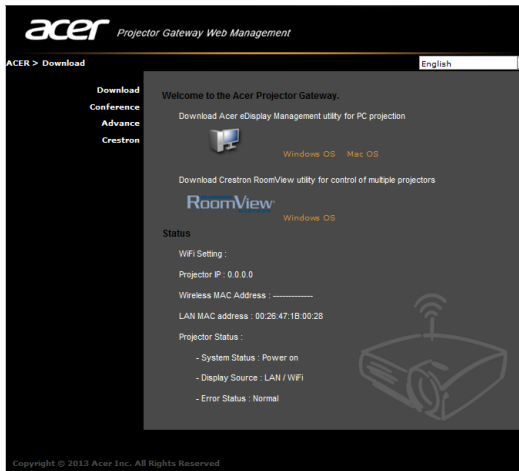
Acer Projector Gateway Web Management



NOTE: Settings on the webpage can only be adjusted when the projector is in AP mode.

Open the Internet browser, it will redirect to "Acer Projector Gateway Web Management" main page automatically, or you can enter the Server IP address to access that.

The default IP address is 192.168.100.10 for general wireless connections.



Download

Download the client software.

You can download installation program for different platforms to execute -

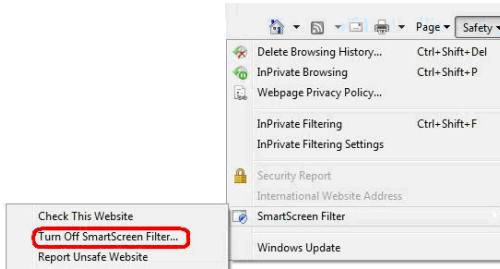
- Acer eDisplayPro Management application for Windows NB or PC
- Mac Utility Client for Mac OS
- Crestron RoomView

After installing the program, the shortcut will come out on the screen.



Note: You also can download it from installation CD.

Note: If using IE V 8.0, please disable SmartScreen Filter before executing download process.

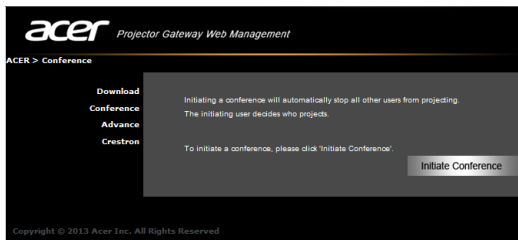


Network Status

Shows IP address of this connection and projector status.

Conference

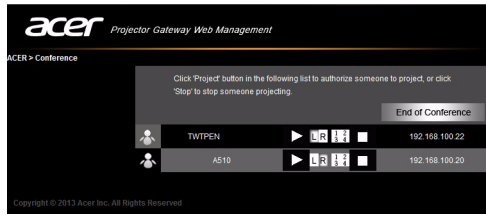
You can initiate conference by webpage.



Clicking on **Initiate Conference** gives you control over who is projecting at any time, deciding the display location for the participant(s), and prevents the current presenter from being disconnected inadvertently. You can select from L/R split-screen or 4 split-screen patterns.

Once a conference has been initiated, all the persons connected to the projector are displayed in a list. The active user is indicated by a shallow in his display

location. To activate a user, click on the **play this user** icon next to the user's name.



Click **End of Conference**  to end the conference.



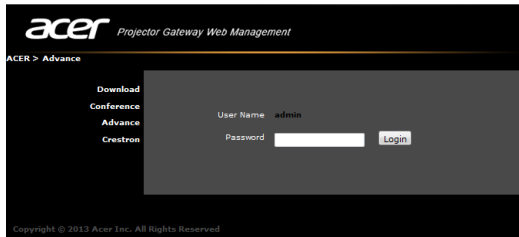
Note: Please remember to log out if you want to end conference.

Note: Up to 8 users in same conference room are allowed.

Note: Video playback is not supported during a conference.

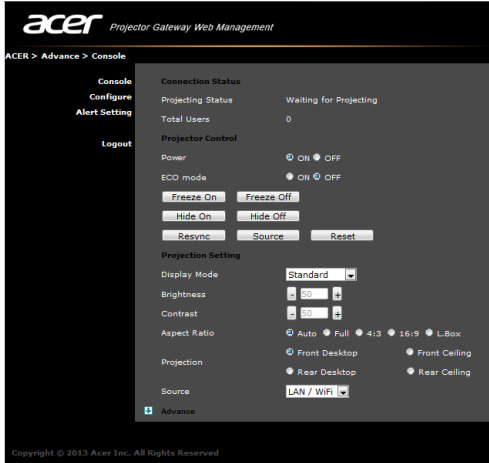
Advance

Login Admin password is default by 123456 to access the advanced setting page.



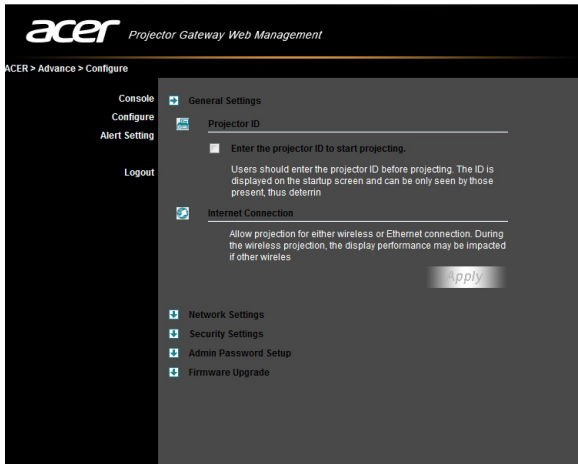
Console (optional)

The Console page gives you access to a variety of status and control features to adjust best projection settings. From this page, you can get projection status, adjust brightness, contrast and aspect ratio, as well as change source and several advanced setting. You can also turn off the projector directly from this page.



Configure

The Configure tab allows you to change a variety of settings.



Projector ID

You can check **Enter the projector ID to start projecting** to ensure that only people in the room are able to access the projector. You can also select who can connect to the Internet via the projector's WLAN router - either all the meeting attendees, or only the person currently projecting.



Note: The APG needs to reboot to apply changes made in **Configure** mode. Please connect to the projector again if you want to continue to use it.

Network settings

Click **Network settings** to adjust other network settings.

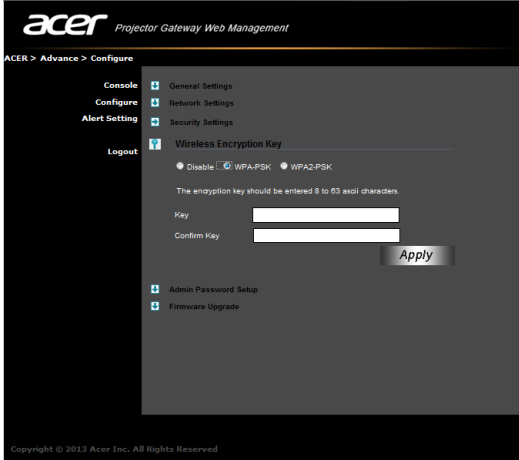
The screenshot shows the Acer Projector Gateway Web Management interface. The breadcrumb path is "ACER > Advance > Configure". The left sidebar contains "Console", "Configure", "Alert Setting", and "Logout". The main content area is titled "Network Settings" and includes a "General Settings" link. The settings are for the access point:

- Projector name (SSID): AcerProjector
- Wireless Channel: Auto
- Obtain an IP address automatically:
- Use the following IP address:

Below these are fields for Device IP, DHCP Server, IP Address, Netmask, Gateway, DNS, Start IP, End IP, and Gateway. The IP Address field is set to 0 . 0 . 0 . 0. The DHCP Server is set to Auto. The Start IP is 192 . 168 . 100 . 20, the End IP is 192 . 168 . 100 . 254, and the Gateway is 192 . 168 . 100 . 10. An "Apply" button is visible at the bottom right. A "Security Settings" link is also present at the bottom.

Security settings

If you're projecting sensitive information, you may want to set up a WPA-PSK key by clicking **Security settings**.



The WPA-PSK/WPA2-PSK encryption key should be entered as 8 to 63 ASCII characters. This feature can be set and enabled by the supervisor.



Note: ASCII (American Standard Code for Information Interchange) is a code for representing characters as "0-9, a-z, A-Z, !, @, #, \$, %, &, *, -, _ , +, =, /, ?" are allowed. Hexadecimal digits consist of the numbers 0-9 and the letters A-F/a-f.




Note: If your OS is Windows XP, additional hotfixes/patches may need to be updated from Microsoft website for WPA2-PSK.
Note: Please be noted that enabling WPA-PSK/WPA2-PSK will increase computing loading and projection performance may be subjected to it.

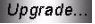
Admin password setup

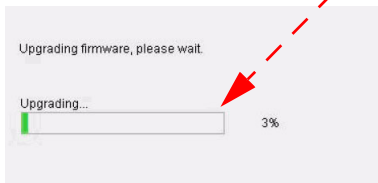
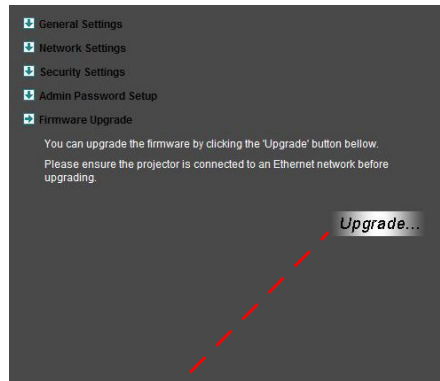
Change the password to login **Advance** webpage by clicking **Admin password setup**. The default supervisor password is 123456.

Firmware upgrade

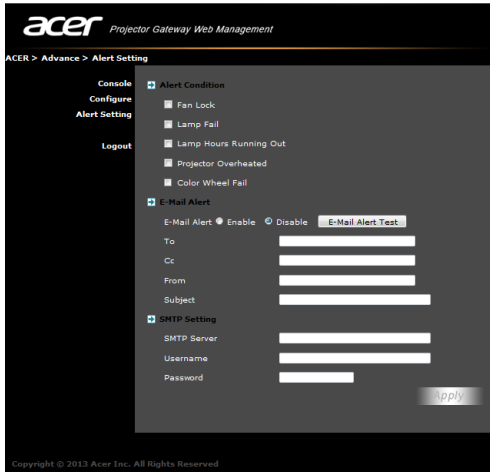
Ensure the projector is connected to the LAN and the Internet, and click on

Firmware upgrade  and then click the **Upgrade...** button

. The projector will access the Internet to automatically download and install any available upgrades.



Alert Setting (optional)

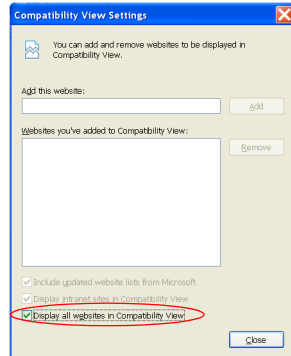
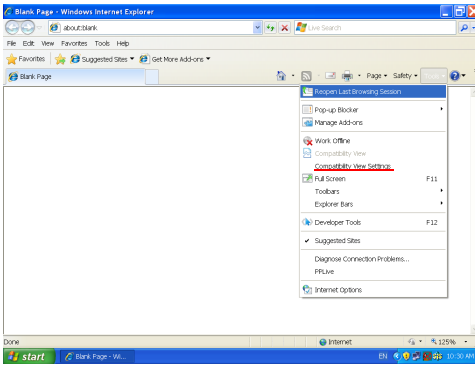


Logout

After tapping "logout", you will return to the download page.



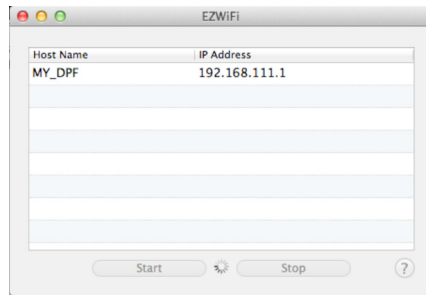
Note: If using IE V8.0, please adjust setting in **Compatibility view settings** to make sure display normally.



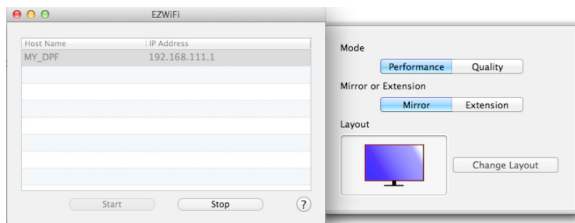
Mac Utility for Mac OS

You can project Mac screen via EZWifi.

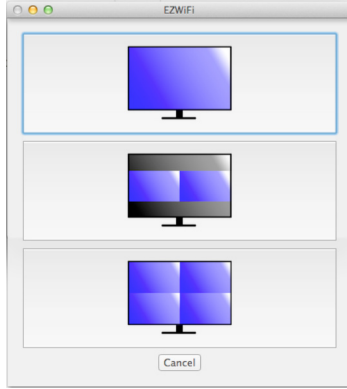
- 1 You can get installation program from CD or download from webpages (See "Acer Projector Gateway Web Management").
- 2 Install the software by double clicking on EZWifi.dmg.
- 3 Make sure you have turned on and connected to the projector. See "Connect to the projector".
- 4 Execute EZWifi.
- 5 Select the projector you want to display.



- 6 You will see below screen and you can select the display mode and decide if you would like to mirror or extend your screen.



- 7 If you want to switch to Split screen for other people to join your display, select "Change Layout".



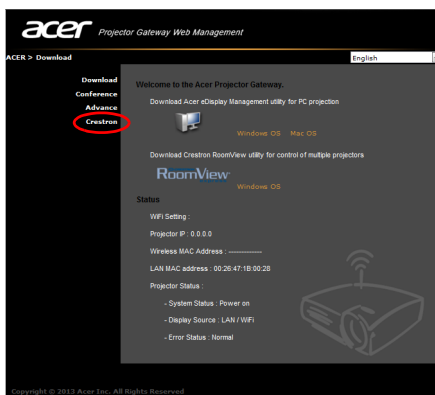
- 8 You can allow maximum 4 different sources to display by the layout change.

Crestron Control Tool (optional)



NOTE: This function is only available for the models equipped with a RJ45 port.

Open the Internet browser, You can find Crestron link in the mainpage of "Acer Projector Gateway Web Management". Tap Crestron to pop up extra interactive FLASH webpage and start to use.



Mainpage



You can control projector by easy-to-use interface as Crestron tool, like volume control, source change and projector setting. For more information, please visit <http://www.crestron.com> & www.crestron.com/getroomview.

Tools

You can get projector IP information here, also can modify networking setting manually and set up password as wish.

Tools Info Contact/IT Help

acer

Crestron Control	Projector	User Password
Ip Address: 192.168.0.20	Projector Name: QTY	<input type="checkbox"/> Enabled
IP ID: 03	Location: 4F	New Password: <input type="text"/>
Port: 41794	Assigned To: P5207	Confirm: <input type="text"/>
<input type="button" value="Send"/>	<input type="button" value="Send"/>	<input type="button" value="Send"/>
	DHCP: <input checked="" type="checkbox"/> Enabled	Admin Password
	Ip Address: 10.82.30.44	<input type="checkbox"/> Enabled
	Subnet Mask: 255.255.255.0	New Password: <input type="text"/>
	Default Gateway: 10.82.30.254	Confirm: <input type="text"/>
	DNS Server: 100.10.0.1	<input type="button" value="Send"/>
	<input type="button" value="Send"/>	
	<input type="button" value="exit"/>	

CRESTRON Expansion Options

Info

You can find projector information easily by this page and also can add additional information to help you manage each projector.

Tools Info Contact/IT Help

acer


Projector Information	Projector Status
Projector Name: QTY	Power Status: Power On
Location: 4F	Source: DLNA
Firmware Version: 0.07	Display Mode: Standard
Mac Address: 00:20:47:1B:00:01	Projection: Front Table
Resolution: 1280x800 59Hz	ECO Mode: Normal Mode
Lamp Hours: 3	Error Status: (No Error)
Assigned To: P5207	
<input type="button" value="exit"/>	

CRESTRON Expansion Options

Contact IT Help

If you encounter any problem about projector, you can use this message window in upper-right of page to do real-time communication with IT people.

[Tools](#) | [Info](#) | [Contact IT Help](#)



HELP DESK

Send

Projector Information

Projector Name

Location

Firmware Version

Mac Address

Resolution

Lamp Hours

Assigned To

Projector Status

Power Status


Source

Display Mode

Projection

ECO Mode

Error Status

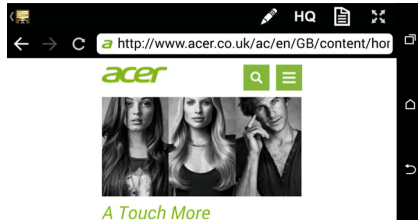
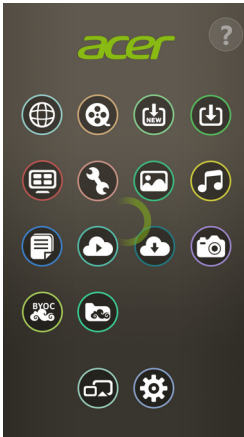

Expansion Options

WiFi Display for iOS/Android (Tablet/Smartphone)

By installing the Acer eDisplayPro on your iOS/Android tablet/smartphone, you can display documents/photo/web contents to the projector. Take Android eDisplayPro to be an example.

- 1 Set the projector in AP or WiFi con-current Mode.
- 2 Plug in acer USB WiFi adapter into the USB A/USB A1/Wireless Dongle port of the projector.
- 3 Adjust projector source to LAN/WiFi and the projector is now ready for projection.
- 4 Download the application "Acer eDisplayPro" from Google play or Apple App store.
- 5 After executing Acer eDisplayPro, connect the found projector with your smart device.
- 6 This application contains the following functions: Document, Dropbox, Internet, Photo, Camera, Video, Split control and Sketch functions.

Android



NOTE: The Internet and Dropbox functions are only available when the projector is in WiFi Con-current Mode.



NOTE: The result of viewing documents via Acer eDisplayPro depends on the hardware ability of your smart device. When the

memory of your smart device is insufficient, some documents may not display correctly.

iOS



System requirements

- iOS

Phone	iOS 7 above. iPhone 5C, iPhone 5S, iPhone 4, iPhone 4S, iPhone 5
Pad	iOS 7 above. the new iPad 3rd gen, new iPad 4th gen, iPad mini

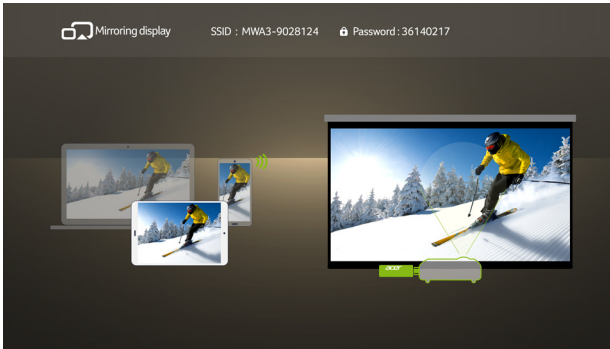
- Android

Phone	Android 4.0 ICS model with 1GB RAM
Pad	Android 4.0 ICS model with 1GB RAM



Mirroring Display (optional)

Adjust projector source to LAN/WiFi, choose "Mirroring Display", you can enjoy mirroring projection from your smartphone to the projector (Android 4.2.2 and selected brand devices).



.....

NOTE: To utilize the Mirroring Display function (optional), make sure you have updated the firmware to the latest version from www.acer.com, and use the acer USB WiFi adapter.



.....

NOTE: This function is only available for Windows 8.1. The default PIN code is 12345670.

Using the USB Modes



Accessing internal memory (RAM)

- 1 Adjust projector source to USB B or USB Connection.
- 2 Connect the USB cable to both projector and NB/PC, plug the type B host to Projector side and type A host to NB/PC side.
- 3 Press ▲/▼ to select USB Storage (RAM) and press ► .
- 4 The projector can be seen as a portable device with a capacity of up to 1 GB on your NB/PC. You can now transfer media files to the projector.

*** Design and specifications are subject to change without notice.